



Demographic and Income Comparison Profile

Lake Park Plaza
5225 Mill Store Rd, Lake Park, Georgia, 31636
Rings: 3, 5, 10 mile radii

Prepared by Esri
Latitude: 30.67792
Longitude: -83.21977

	3 miles	5 miles	10 miles
Census 2010 Summary			
Population	5,516	9,009	24,159
Households	2,193	3,440	8,525
Families	1,545	2,473	6,225
Average Household Size	2.52	2.62	2.76
Owner Occupied Housing Units	1,474	2,447	6,204
Renter Occupied Housing Units	719	993	2,321
Median Age	38.6	38.1	36.2
2016 Summary			
Population	5,917	9,602	25,442
Households	2,316	3,614	8,912
Families	1,614	2,571	6,447
Average Household Size	2.55	2.66	2.79
Owner Occupied Housing Units	1,436	2,393	6,074
Renter Occupied Housing Units	881	1,221	2,839
Median Age	38.9	38.6	36.8
Median Household Income	\$46,931	\$45,371	\$39,985
Average Household Income	\$58,668	\$58,319	\$53,686
2021 Summary			
Population	6,185	9,999	26,252
Households	2,410	3,749	9,182
Families	1,670	2,651	6,609
Average Household Size	2.57	2.67	2.79
Owner Occupied Housing Units	1,482	2,464	6,232
Renter Occupied Housing Units	928	1,284	2,950
Median Age	39.0	39.2	37.9
Median Household Income	\$51,121	\$49,861	\$41,181
Average Household Income	\$63,832	\$63,378	\$58,261
Trends: 2016-2021 Annual Rate			
Population	0.89%	0.81%	0.63%
Households	0.80%	0.74%	0.60%
Families	0.68%	0.61%	0.50%
Owner Households	0.63%	0.59%	0.51%
Median Household Income	1.73%	1.91%	0.59%

Source: U.S. Census Bureau, Census 2010 Summary File 1. Esri forecasts for 2016 and 2021.

March 01, 2017



Demographic and Income Comparison Profile

Lake Park Plaza
 5225 Mill Store Rd, Lake Park, Georgia, 31636
 Rings: 3, 5, 10 mile radii

Prepared by Esri
 Latitude: 30.67792
 Longitude: -83.21977

2016 Households by Income	3 miles		5 miles		10 miles	
	Number	Percent	Number	Percent	Number	Percent
<\$15,000	300	13.0%	486	13.4%	1,406	15.8%
\$15,000 - \$24,999	310	13.4%	454	12.6%	1,241	13.9%
\$25,000 - \$34,999	265	11.4%	429	11.9%	1,227	13.8%
\$35,000 - \$49,999	337	14.6%	579	16.0%	1,413	15.9%
\$50,000 - \$74,999	442	19.1%	703	19.5%	1,657	18.6%
\$75,000 - \$99,999	316	13.6%	435	12.0%	883	9.9%
\$100,000 - \$149,999	242	10.4%	350	9.7%	741	8.3%
\$150,000 - \$199,999	88	3.8%	139	3.8%	234	2.6%
\$200,000+	17	0.7%	39	1.1%	111	1.2%
Median Household Income	\$46,931		\$45,371		\$39,985	
Average Household Income	\$58,668		\$58,319		\$53,686	
Per Capita Income	\$22,865		\$22,044		\$19,363	

2021 Households by Income	3 miles		5 miles		10 miles	
	Number	Percent	Number	Percent	Number	Percent
<\$15,000	320	13.3%	521	13.9%	1,513	16.5%
\$15,000 - \$24,999	307	12.7%	455	12.1%	1,236	13.5%
\$25,000 - \$34,999	339	14.1%	550	14.7%	1,406	15.3%
\$35,000 - \$49,999	211	8.8%	350	9.3%	907	9.9%
\$50,000 - \$74,999	423	17.6%	701	18.7%	1,719	18.7%
\$75,000 - \$99,999	354	14.7%	490	13.1%	1,027	11.2%
\$100,000 - \$149,999	321	13.3%	451	12.0%	937	10.2%
\$150,000 - \$199,999	114	4.7%	181	4.8%	305	3.3%
\$200,000+	21	0.9%	48	1.3%	132	1.4%
Median Household Income	\$51,121		\$49,861		\$41,181	
Average Household Income	\$63,832		\$63,378		\$58,261	
Per Capita Income	\$24,770		\$23,864		\$20,930	

Data Note: Income is expressed in current dollars.

Source: U.S. Census Bureau, Census 2010 Summary File 1. Esri forecasts for 2016 and 2021.



Demographic and Income Comparison Profile

Lake Park Plaza
 5225 Mill Store Rd, Lake Park, Georgia, 31636
 Rings: 3, 5, 10 mile radii

Prepared by Esri
 Latitude: 30.67792
 Longitude: -83.21977

2010 Population by Age	3 miles		5 miles		10 miles	
	Number	Percent	Number	Percent	Number	Percent
Age 0 - 4	404	7.3%	663	7.4%	1,804	7.5%
Age 5 - 9	372	6.7%	620	6.9%	1,699	7.0%
Age 10 - 14	389	7.1%	644	7.1%	1,782	7.4%
Age 15 - 19	394	7.1%	644	7.1%	1,826	7.6%
Age 20 - 24	284	5.2%	499	5.5%	1,561	6.5%
Age 25 - 34	666	12.1%	1,074	11.9%	3,034	12.6%
Age 35 - 44	734	13.3%	1,198	13.3%	3,249	13.4%
Age 45 - 54	779	14.1%	1,305	14.5%	3,438	14.2%
Age 55 - 64	725	13.1%	1,178	13.1%	2,877	11.9%
Age 65 - 74	468	8.5%	727	8.1%	1,782	7.4%
Age 75 - 84	241	4.4%	368	4.1%	885	3.7%
Age 85+	61	1.1%	87	1.0%	224	0.9%

2016 Population by Age	3 miles		5 miles		10 miles	
	Number	Percent	Number	Percent	Number	Percent
Age 0 - 4	411	6.9%	671	7.0%	1,816	7.1%
Age 5 - 9	426	7.2%	692	7.2%	1,821	7.2%
Age 10 - 14	394	6.7%	645	6.7%	1,748	6.9%
Age 15 - 19	352	5.9%	577	6.0%	1,643	6.5%
Age 20 - 24	347	5.9%	568	5.9%	1,723	6.8%
Age 25 - 34	758	12.8%	1,243	12.9%	3,424	13.5%
Age 35 - 44	708	12.0%	1,148	12.0%	3,137	12.3%
Age 45 - 54	785	13.3%	1,286	13.4%	3,371	13.2%
Age 55 - 64	772	13.0%	1,270	13.2%	3,177	12.5%
Age 65 - 74	604	10.2%	967	10.1%	2,323	9.1%
Age 75 - 84	276	4.7%	413	4.3%	979	3.8%
Age 85+	84	1.4%	122	1.3%	282	1.1%

2021 Population by Age	3 miles		5 miles		10 miles	
	Number	Percent	Number	Percent	Number	Percent
Age 0 - 4	405	6.5%	653	6.5%	1,776	6.8%
Age 5 - 9	439	7.1%	704	7.0%	1,836	7.0%
Age 10 - 14	466	7.5%	748	7.5%	1,927	7.3%
Age 15 - 19	382	6.2%	627	6.3%	1,744	6.6%
Age 20 - 24	292	4.7%	484	4.8%	1,507	5.7%
Age 25 - 34	764	12.3%	1,216	12.2%	3,360	12.8%
Age 35 - 44	793	12.8%	1,254	12.5%	3,252	12.4%
Age 45 - 54	747	12.1%	1,224	12.2%	3,274	12.5%
Age 55 - 64	773	12.5%	1,303	13.0%	3,316	12.6%
Age 65 - 74	680	11.0%	1,107	11.1%	2,686	10.2%
Age 75 - 84	348	5.6%	534	5.3%	1,253	4.8%
Age 85+	98	1.6%	143	1.4%	320	1.2%

Source: U.S. Census Bureau, Census 2010 Summary File 1. Esri forecasts for 2016 and 2021.



Demographic and Income Comparison Profile

Lake Park Plaza
 5225 Mill Store Rd, Lake Park, Georgia, 31636
 Rings: 3, 5, 10 mile radii

Prepared by Esri
 Latitude: 30.67792
 Longitude: -83.21977

2010 Race and Ethnicity	3 miles		5 miles		10 miles	
	Number	Percent	Number	Percent	Number	Percent
White Alone	4,391	79.6%	7,019	77.9%	17,732	73.4%
Black Alone	781	14.2%	1,345	14.9%	4,242	17.6%
American Indian Alone	23	0.4%	39	0.4%	121	0.5%
Asian Alone	63	1.1%	84	0.9%	131	0.5%
Pacific Islander Alone	3	0.1%	17	0.2%	41	0.2%
Some Other Race Alone	141	2.6%	304	3.4%	1,350	5.6%
Two or More Races	113	2.0%	201	2.2%	543	2.2%
Hispanic Origin (Any Race)	282	5.1%	594	6.6%	2,622	10.9%

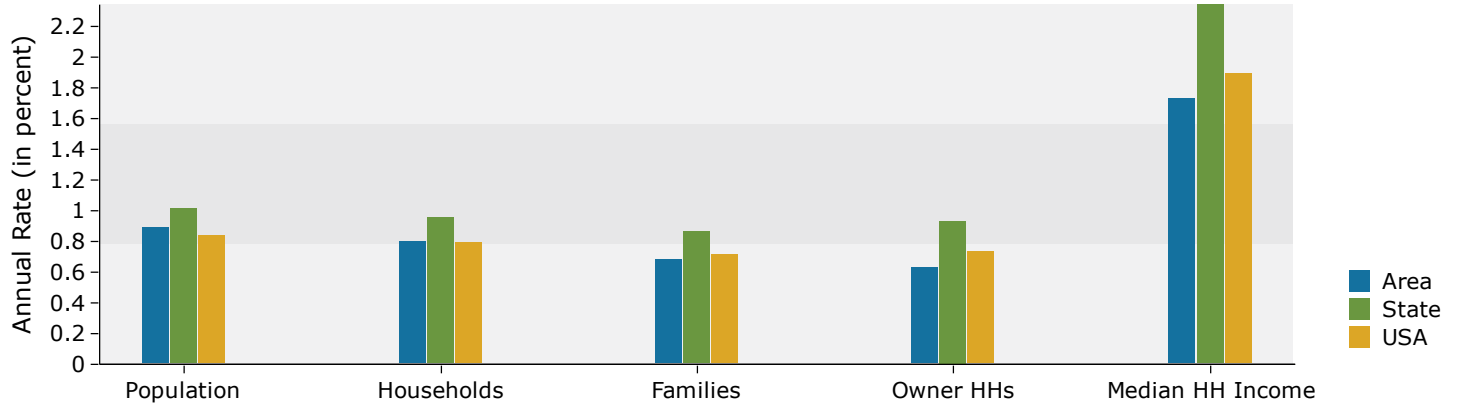
2016 Race and Ethnicity	3 miles		5 miles		10 miles	
	Number	Percent	Number	Percent	Number	Percent
White Alone	4,568	77.2%	7,244	75.5%	18,147	71.3%
Black Alone	911	15.4%	1,541	16.1%	4,666	18.3%
American Indian Alone	23	0.4%	40	0.4%	131	0.5%
Asian Alone	79	1.3%	106	1.1%	173	0.7%
Pacific Islander Alone	3	0.1%	21	0.2%	47	0.2%
Some Other Race Alone	186	3.1%	391	4.1%	1,597	6.3%
Two or More Races	147	2.5%	258	2.7%	681	2.7%
Hispanic Origin (Any Race)	382	6.5%	780	8.1%	3,117	12.3%

2021 Race and Ethnicity	3 miles		5 miles		10 miles	
	Number	Percent	Number	Percent	Number	Percent
White Alone	4,641	75.0%	7,333	73.3%	18,273	69.6%
Black Alone	1,008	16.3%	1,683	16.8%	4,963	18.9%
American Indian Alone	23	0.4%	40	0.4%	133	0.5%
Asian Alone	94	1.5%	124	1.2%	206	0.8%
Pacific Islander Alone	4	0.1%	25	0.3%	54	0.2%
Some Other Race Alone	235	3.8%	484	4.8%	1,825	7.0%
Two or More Races	180	2.9%	310	3.1%	798	3.0%
Hispanic Origin (Any Race)	486	7.9%	966	9.7%	3,570	13.6%

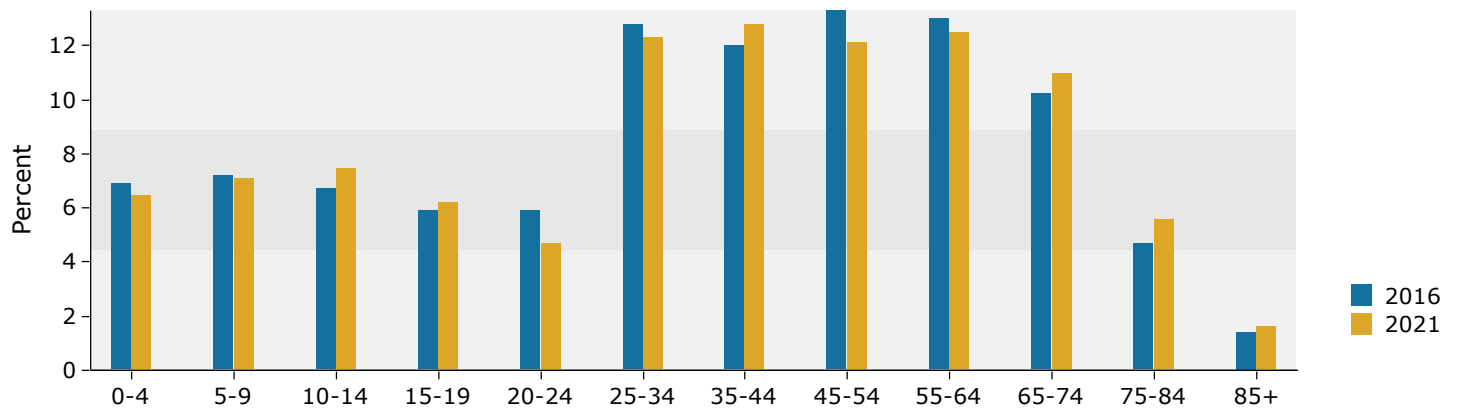
Source: U.S. Census Bureau, Census 2010 Summary File 1. Esri forecasts for 2016 and 2021.

3 miles

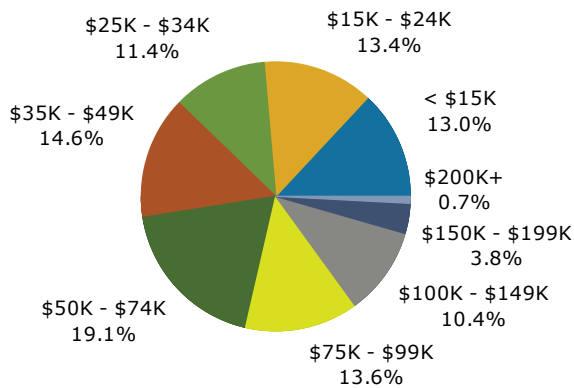
Trends 2016-2021



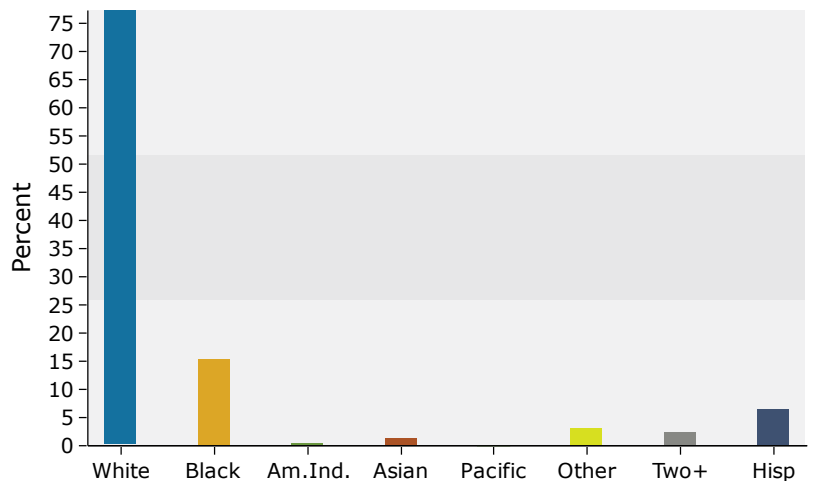
Population by Age



2016 Household Income



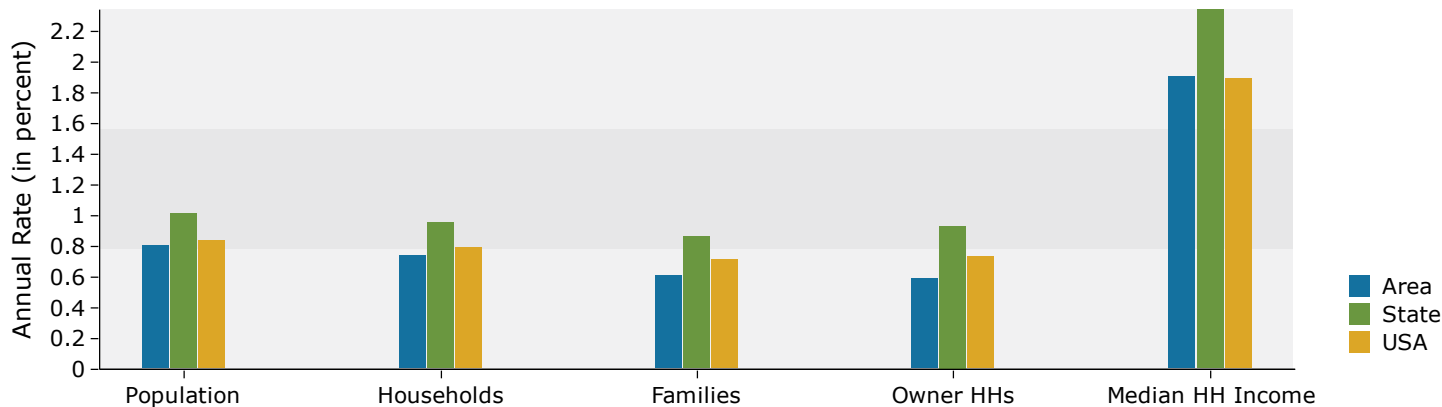
2016 Population by Race



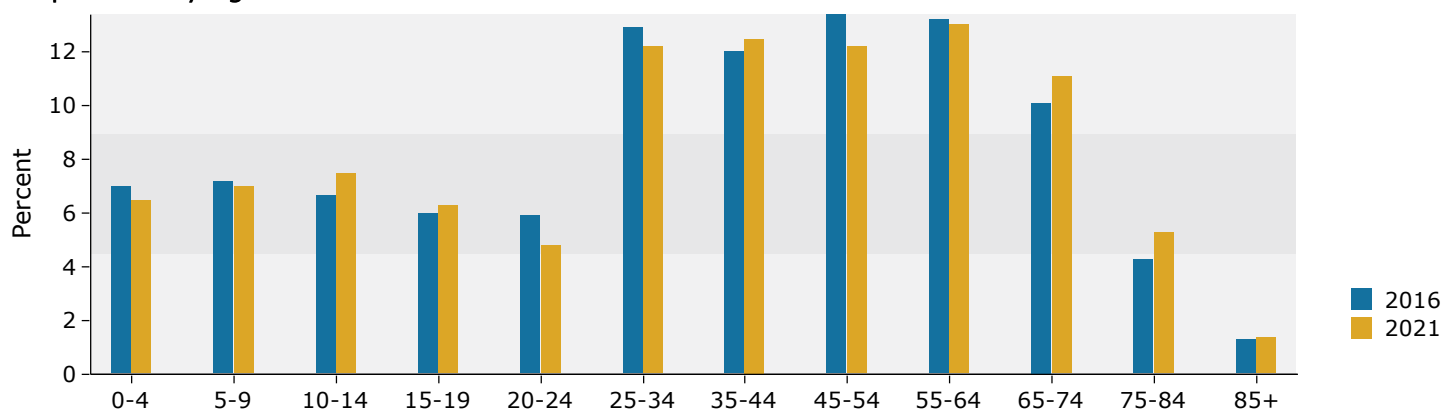
Source: U.S. Census Bureau, Census 2010 Summary File 1. Esri forecasts for 2016 and 2021.

5 miles

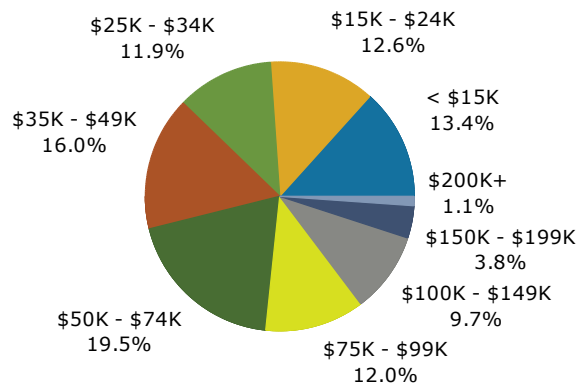
Trends 2016-2021



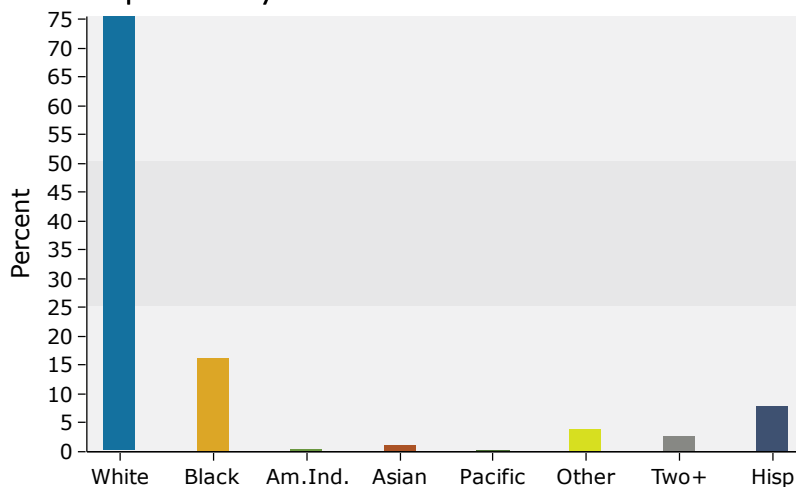
Population by Age



2016 Household Income



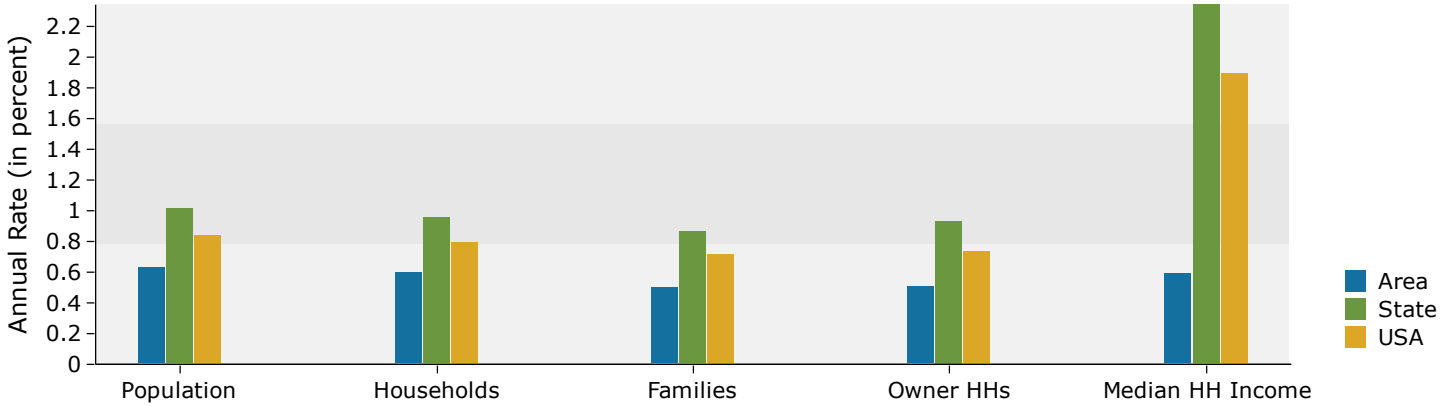
2016 Population by Race



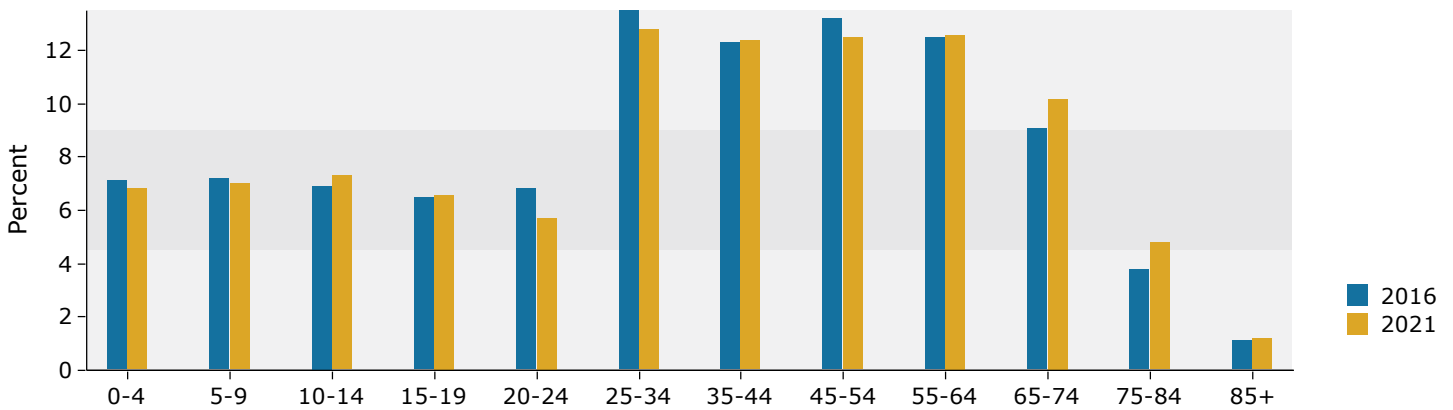
Source: U.S. Census Bureau, Census 2010 Summary File 1. Esri forecasts for 2016 and 2021.

10 miles

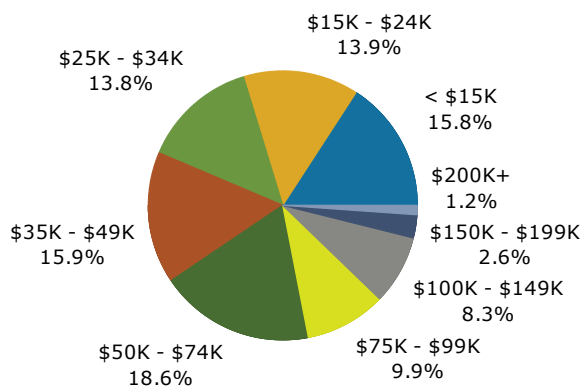
Trends 2016-2021



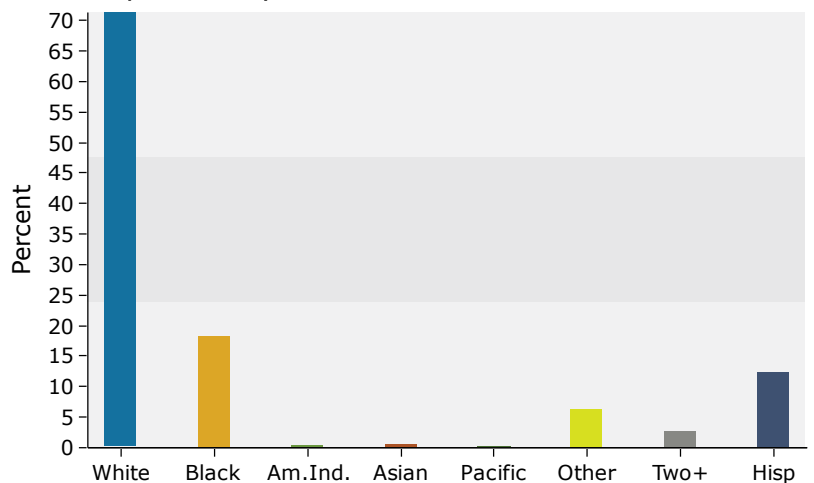
Population by Age



2016 Household Income



2016 Population by Race



Source: U.S. Census Bureau, Census 2010 Summary File 1. Esri forecasts for 2016 and 2021.