



Demographic and Income Comparison Profile

Lake Park Plaza
5225 Mill Store Rd, Lake Park, Georgia, 31636
Rings: 3, 5, 10 mile radii

Prepared by Esri
Latitude: 30.67792
Longitude: -83.21973

	3 miles	5 miles	10 miles
Census 2010 Summary			
Population	5,516	9,009	24,159
Households	2,193	3,440	8,525
Families	1,545	2,473	6,225
Average Household Size	2.52	2.62	2.76
Owner Occupied Housing Units	1,474	2,447	6,204
Renter Occupied Housing Units	719	993	2,321
Median Age	38.6	38.1	36.2
2017 Summary			
Population	5,866	9,517	24,851
Households	2,322	3,618	8,810
Families	1,614	2,568	6,358
Average Household Size	2.53	2.63	2.76
Owner Occupied Housing Units	1,440	2,395	5,999
Renter Occupied Housing Units	882	1,223	2,810
Median Age	39.0	38.8	37.2
Median Household Income	\$49,494	\$48,165	\$42,678
Average Household Income	\$60,903	\$61,041	\$56,705
2022 Summary			
Population	6,074	9,816	25,330
Households	2,403	3,729	8,984
Families	1,660	2,630	6,448
Average Household Size	2.53	2.63	2.76
Owner Occupied Housing Units	1,479	2,449	6,086
Renter Occupied Housing Units	924	1,279	2,898
Median Age	39.2	39.4	38.4
Median Household Income	\$54,595	\$53,861	\$48,579
Average Household Income	\$70,264	\$71,160	\$66,003
Trends: 2017-2022 Annual Rate			
Population	0.70%	0.62%	0.38%
Households	0.69%	0.61%	0.39%
Families	0.56%	0.48%	0.28%
Owner Households	0.54%	0.45%	0.29%
Median Household Income	1.98%	2.26%	2.62%

Source: U.S. Census Bureau, Census 2010 Summary File 1. Esri forecasts for 2017 and 2022.



Demographic and Income Comparison Profile

Lake Park Plaza
 5225 Mill Store Rd, Lake Park, Georgia, 31636
 Rings: 3, 5, 10 mile radii

Prepared by Esri
 Latitude: 30.67792
 Longitude: -83.21973

2017 Households by Income	3 miles		5 miles		10 miles	
	Number	Percent	Number	Percent	Number	Percent
<\$15,000	275	11.8%	443	12.2%	1,283	14.6%
\$15,000 - \$24,999	298	12.8%	436	12.1%	1,172	13.3%
\$25,000 - \$34,999	257	11.1%	407	11.2%	1,127	12.8%
\$35,000 - \$49,999	339	14.6%	576	15.9%	1,386	15.7%
\$50,000 - \$74,999	470	20.2%	743	20.5%	1,734	19.7%
\$75,000 - \$99,999	290	12.5%	407	11.2%	862	9.8%
\$100,000 - \$149,999	272	11.7%	400	11.1%	845	9.6%
\$150,000 - \$199,999	103	4.4%	165	4.6%	280	3.2%
\$200,000+	17	0.7%	41	1.1%	121	1.4%
Median Household Income	\$49,494		\$48,165		\$42,678	
Average Household Income	\$60,903		\$61,041		\$56,705	
Per Capita Income	\$24,004		\$23,306		\$20,601	

2022 Households by Income	3 miles		5 miles		10 miles	
	Number	Percent	Number	Percent	Number	Percent
<\$15,000	272	11.3%	433	11.6%	1,238	13.8%
\$15,000 - \$24,999	283	11.8%	410	11.0%	1,085	12.1%
\$25,000 - \$34,999	235	9.8%	362	9.7%	999	11.1%
\$35,000 - \$49,999	300	12.5%	507	13.6%	1,260	14.0%
\$50,000 - \$74,999	441	18.4%	699	18.7%	1,668	18.6%
\$75,000 - \$99,999	346	14.4%	490	13.1%	1,039	11.6%
\$100,000 - \$149,999	365	15.2%	546	14.6%	1,159	12.9%
\$150,000 - \$199,999	137	5.7%	223	6.0%	378	4.2%
\$200,000+	24	1.0%	57	1.5%	157	1.7%
Median Household Income	\$54,595		\$53,861		\$48,579	
Average Household Income	\$70,264		\$71,160		\$66,003	
Per Capita Income	\$27,682		\$27,155		\$23,912	

Data Note: Income is expressed in current dollars.

Source: U.S. Census Bureau, Census 2010 Summary File 1. Esri forecasts for 2017 and 2022.



Demographic and Income Comparison Profile

Lake Park Plaza
 5225 Mill Store Rd, Lake Park, Georgia, 31636
 Rings: 3, 5, 10 mile radii

Prepared by Esri
 Latitude: 30.67792
 Longitude: -83.21973

2010 Population by Age	3 miles		5 miles		10 miles	
	Number	Percent	Number	Percent	Number	Percent
Age 0 - 4	404	7.3%	663	7.4%	1,804	7.5%
Age 5 - 9	372	6.7%	620	6.9%	1,699	7.0%
Age 10 - 14	389	7.1%	644	7.1%	1,782	7.4%
Age 15 - 19	394	7.1%	644	7.1%	1,826	7.6%
Age 20 - 24	284	5.2%	499	5.5%	1,561	6.5%
Age 25 - 34	666	12.1%	1,074	11.9%	3,034	12.6%
Age 35 - 44	734	13.3%	1,198	13.3%	3,249	13.4%
Age 45 - 54	779	14.1%	1,305	14.5%	3,438	14.2%
Age 55 - 64	725	13.1%	1,178	13.1%	2,877	11.9%
Age 65 - 74	468	8.5%	727	8.1%	1,782	7.4%
Age 75 - 84	241	4.4%	368	4.1%	885	3.7%
Age 85+	61	1.1%	87	1.0%	224	0.9%

2017 Population by Age	3 miles		5 miles		10 miles	
	Number	Percent	Number	Percent	Number	Percent
Age 0 - 4	399	6.8%	652	6.9%	1,743	7.0%
Age 5 - 9	418	7.1%	677	7.1%	1,775	7.1%
Age 10 - 14	393	6.7%	641	6.7%	1,704	6.9%
Age 15 - 19	340	5.8%	557	5.9%	1,544	6.2%
Age 20 - 24	333	5.7%	547	5.7%	1,602	6.4%
Age 25 - 34	762	13.0%	1,252	13.2%	3,380	13.6%
Age 35 - 44	701	11.9%	1,132	11.9%	3,042	12.2%
Age 45 - 54	765	13.0%	1,252	13.2%	3,253	13.1%
Age 55 - 64	764	13.0%	1,262	13.3%	3,167	12.7%
Age 65 - 74	620	10.6%	995	10.5%	2,373	9.5%
Age 75 - 84	284	4.8%	425	4.5%	985	4.0%
Age 85+	88	1.5%	126	1.3%	285	1.1%

2022 Population by Age	3 miles		5 miles		10 miles	
	Number	Percent	Number	Percent	Number	Percent
Age 0 - 4	394	6.5%	636	6.5%	1,689	6.7%
Age 5 - 9	428	7.0%	685	7.0%	1,768	7.0%
Age 10 - 14	455	7.5%	728	7.4%	1,853	7.3%
Age 15 - 19	378	6.2%	618	6.3%	1,657	6.5%
Age 20 - 24	279	4.6%	464	4.7%	1,382	5.5%
Age 25 - 34	755	12.4%	1,198	12.2%	3,207	12.7%
Age 35 - 44	782	12.9%	1,244	12.7%	3,197	12.6%
Age 45 - 54	713	11.7%	1,170	11.9%	3,090	12.2%
Age 55 - 64	757	12.5%	1,272	13.0%	3,234	12.8%
Age 65 - 74	671	11.0%	1,095	11.2%	2,656	10.5%
Age 75 - 84	363	6.0%	561	5.7%	1,283	5.1%
Age 85+	100	1.6%	144	1.5%	314	1.2%

Source: U.S. Census Bureau, Census 2010 Summary File 1. Esri forecasts for 2017 and 2022.



Demographic and Income Comparison Profile

Lake Park Plaza
 5225 Mill Store Rd, Lake Park, Georgia, 31636
 Rings: 3, 5, 10 mile radii

Prepared by Esri
 Latitude: 30.67792
 Longitude: -83.21973

2010 Race and Ethnicity	3 miles		5 miles		10 miles	
	Number	Percent	Number	Percent	Number	Percent
White Alone	4,391	79.6%	7,019	77.9%	17,732	73.4%
Black Alone	781	14.2%	1,345	14.9%	4,242	17.6%
American Indian Alone	23	0.4%	39	0.4%	121	0.5%
Asian Alone	63	1.1%	84	0.9%	131	0.5%
Pacific Islander Alone	3	0.1%	17	0.2%	41	0.2%
Some Other Race Alone	141	2.6%	304	3.4%	1,350	5.6%
Two or More Races	113	2.0%	201	2.2%	543	2.2%
Hispanic Origin (Any Race)	282	5.1%	594	6.6%	2,622	10.9%

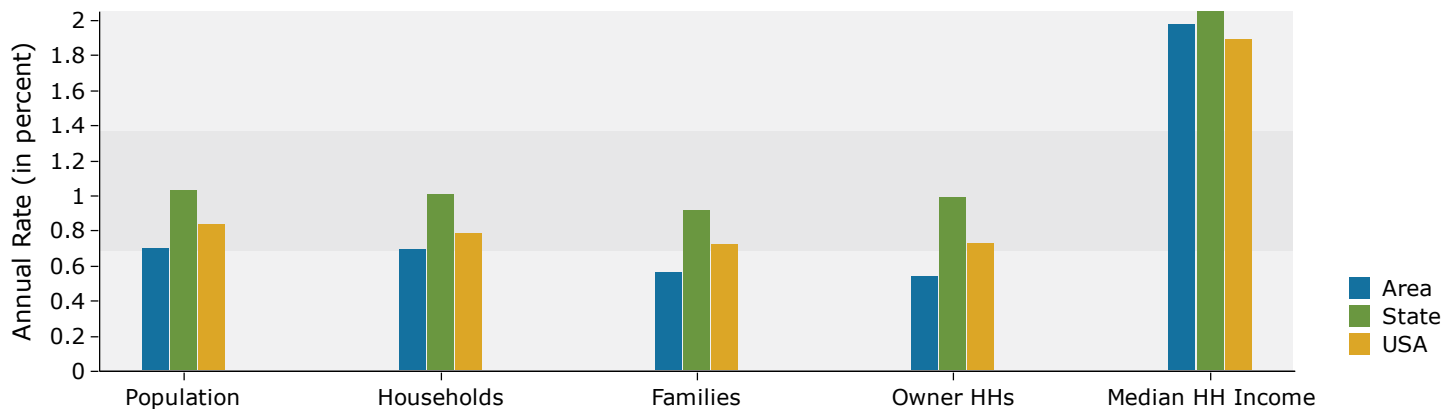
2017 Race and Ethnicity	3 miles		5 miles		10 miles	
	Number	Percent	Number	Percent	Number	Percent
White Alone	4,511	76.9%	7,153	75.2%	17,682	71.2%
Black Alone	900	15.3%	1,524	16.0%	4,532	18.2%
American Indian Alone	24	0.4%	41	0.4%	131	0.5%
Asian Alone	91	1.6%	120	1.3%	186	0.7%
Pacific Islander Alone	3	0.1%	19	0.2%	44	0.2%
Some Other Race Alone	187	3.2%	396	4.2%	1,592	6.4%
Two or More Races	150	2.6%	264	2.8%	683	2.7%
Hispanic Origin (Any Race)	386	6.6%	788	8.3%	3,108	12.5%

2022 Race and Ethnicity	3 miles		5 miles		10 miles	
	Number	Percent	Number	Percent	Number	Percent
White Alone	4,547	74.9%	7,177	73.1%	17,586	69.4%
Black Alone	974	16.0%	1,630	16.6%	4,720	18.6%
American Indian Alone	24	0.4%	42	0.4%	138	0.5%
Asian Alone	112	1.8%	147	1.5%	229	0.9%
Pacific Islander Alone	3	0.0%	21	0.2%	49	0.2%
Some Other Race Alone	233	3.8%	484	4.9%	1,816	7.2%
Two or More Races	181	3.0%	315	3.2%	793	3.1%
Hispanic Origin (Any Race)	482	7.9%	963	9.8%	3,534	14.0%

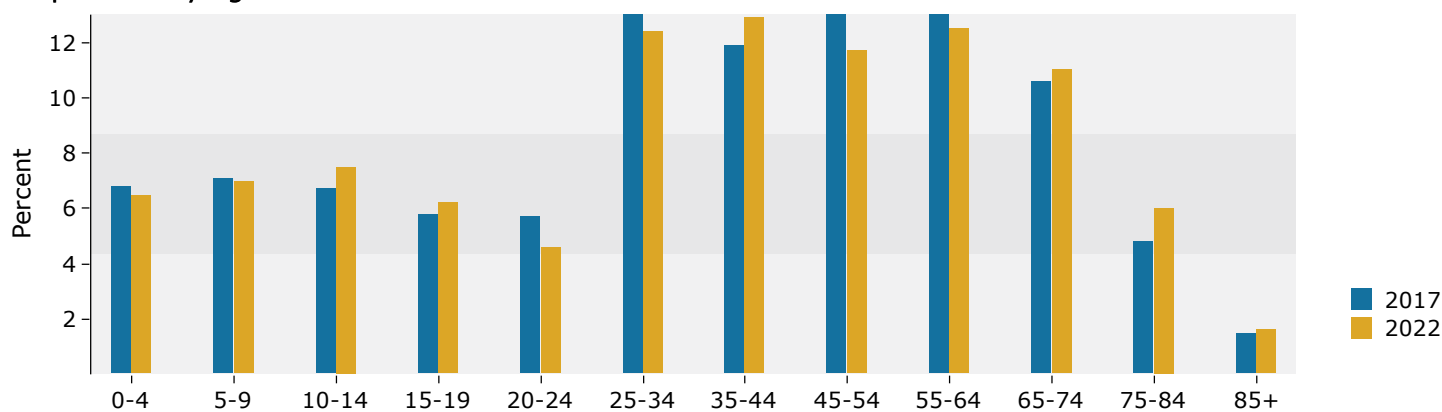
Source: U.S. Census Bureau, Census 2010 Summary File 1. Esri forecasts for 2017 and 2022.

3 miles

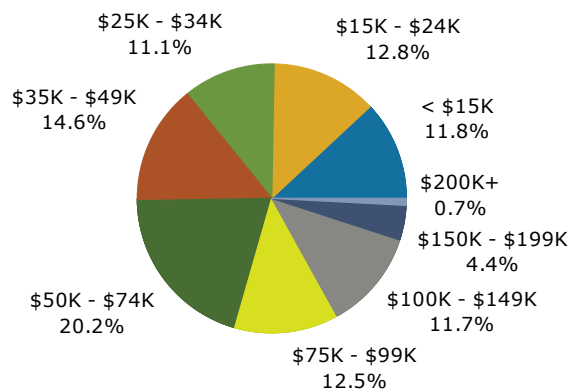
Trends 2017-2022



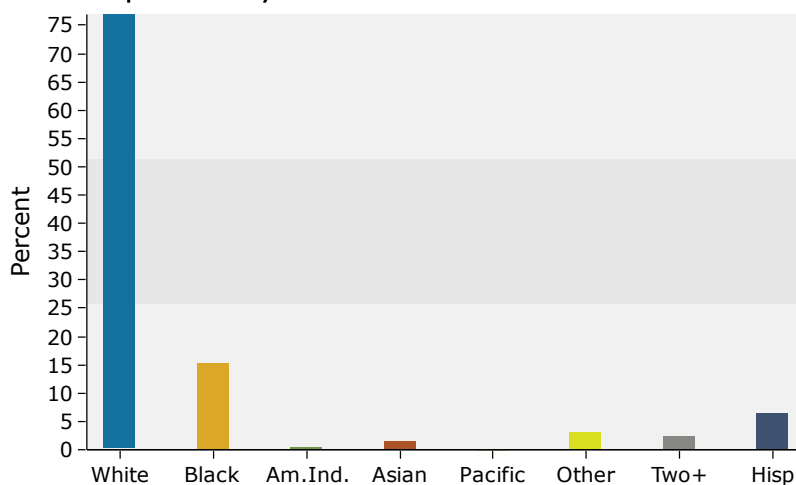
Population by Age



2017 Household Income



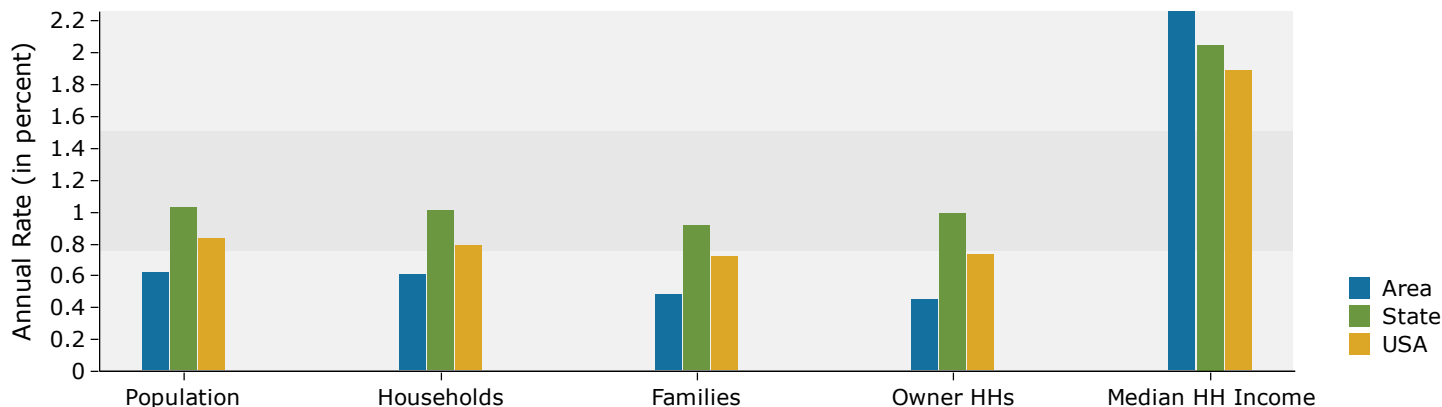
2017 Population by Race



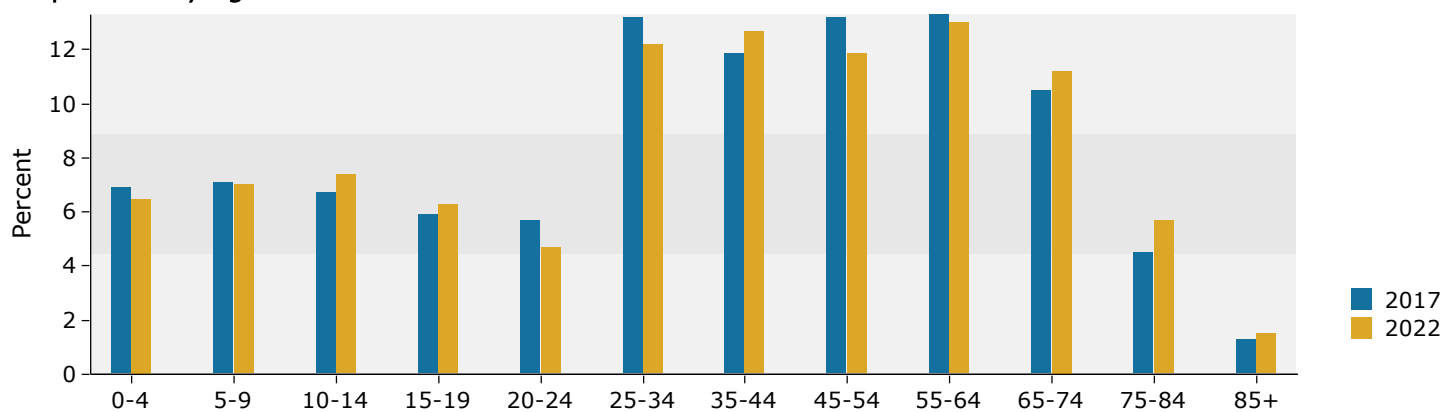
Source: U.S. Census Bureau, Census 2010 Summary File 1. Esri forecasts for 2017 and 2022.

5 miles

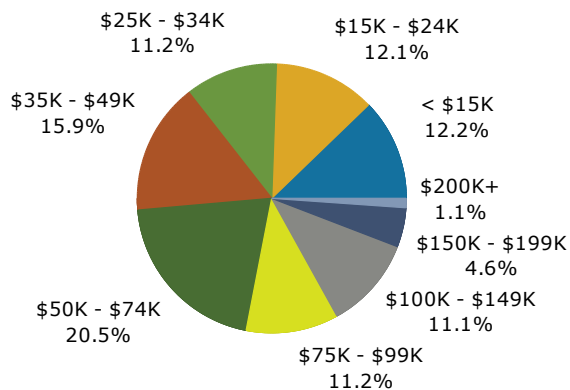
Trends 2017-2022



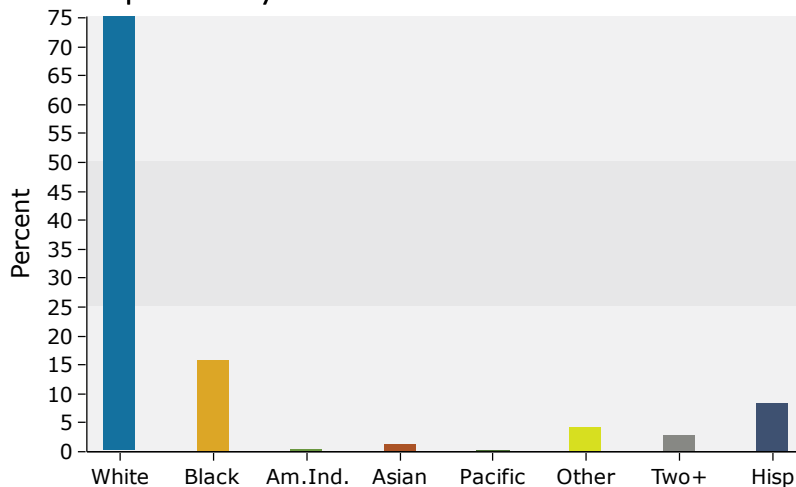
Population by Age



2017 Household Income



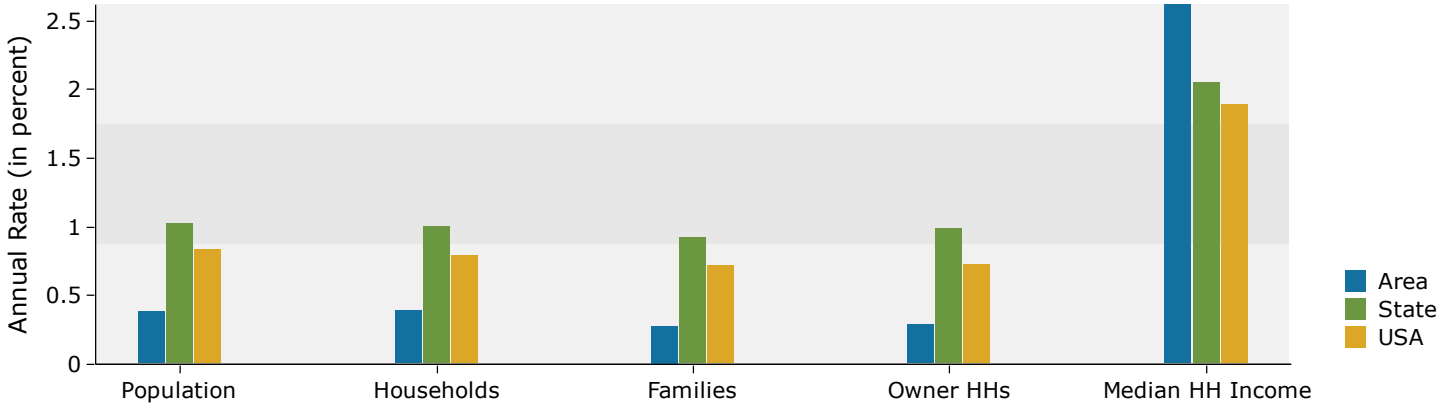
2017 Population by Race



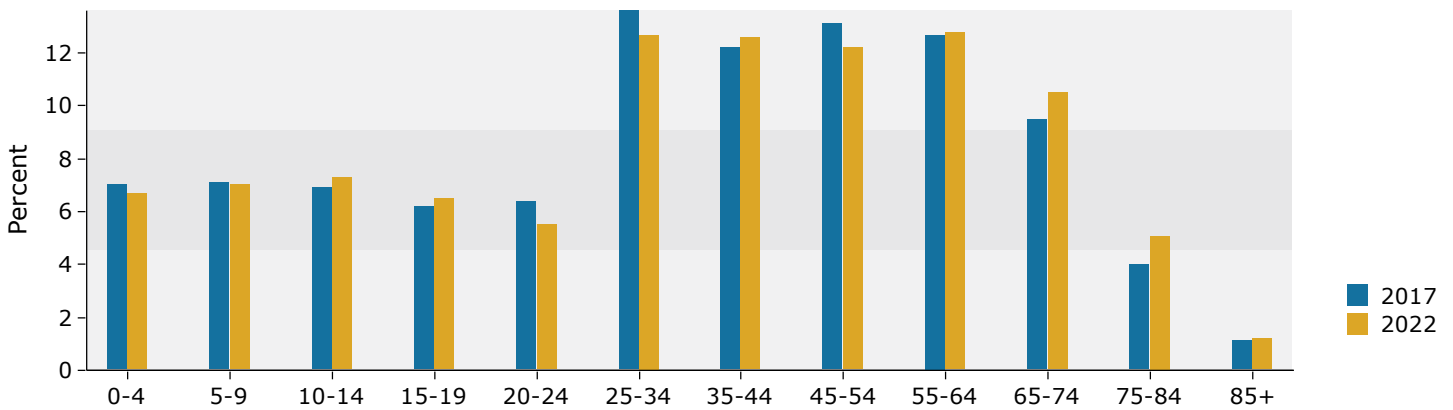
Source: U.S. Census Bureau, Census 2010 Summary File 1. Esri forecasts for 2017 and 2022.

10 miles

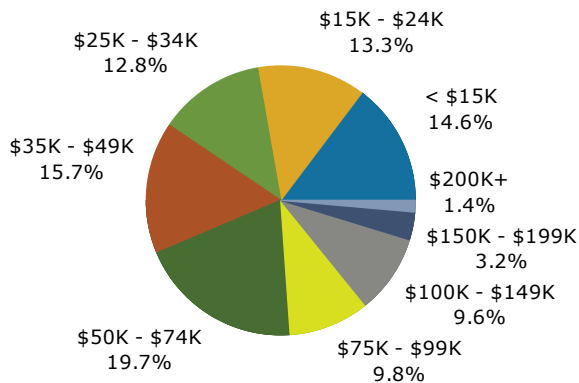
Trends 2017-2022



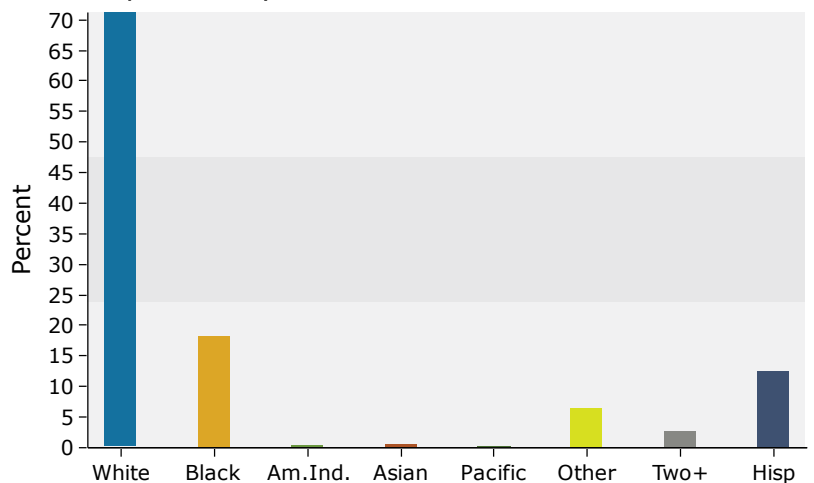
Population by Age



2017 Household Income



2017 Population by Race



Source: U.S. Census Bureau, Census 2010 Summary File 1. Esri forecasts for 2017 and 2022.